

## **Historic, Archive Document**

Do not assume content reflects current scientific knowledge, policies, or practices.



62.09



GOVERNOR WARREN



HIGHLANDER



CATALINA

LIBRARY  
 RECEIVED  
 JAN 30 1948  
 U. S. Department of Agriculture



# 1948

GIANT

# BALLAY

DAHLIAS



## Ballay Dahlia Gardens

4309 El Camino Real

PALO ALTO, CALIFORNIA



TWENTY-SEVENTH ANNUAL CATALOGUE

BALLAY DAHLIA GARDENS

4309 El Camino Real

PALO ALTO, CALIFORNIA

---

**PLEASE NOTE** — When ordering please write NAME and ADDRESS plainly, also state date delivery is desired. It is better not to have roots delivered until you are ready to use them. As the stock of some varieties is limited and the demand this year is heavy, it is well to name some second choices. We do not substitute without permission. All shipments prior to April 1st, except on the Pacific Coast, are sent by Express Collect to insure against freezing. We do not sell green plants. Prices listed are for strong field-grown root divisions.

**TERMS** — CASH WITH ORDER or before date of shipment. On retail orders for California delivery 2½% Sales Tax should be added to the amount to comply with the Sales Tax Law. We guarantee that all roots sent are true to name and in good growing condition, but beyond this assume no responsibility. All orders are accepted with this provision.

**EXPLANATION OF TYPES** —

Informal Decorative (I. D.). Double flowers, full to the center, usually with long irregular petals.

Formal Decorative (F. D.). Double flowers, full to the center, usually with broad flat petals.

Cactus (C.). Double flowers, full to the center, with long, narrow, pointed petals, incurved, recurved or straight, and rolled at least half their length.

Semi-Cactus (S. C.). Double flowers, full to the center, with coarse, twisted petals, usually somewhat incurved, and rolled ordinarily less than half their length.

---

**DAHLIA SEEDS** — Hand pollenized dahlia seeds from the largest and best varieties.....**\$10.00 per 100 Net**

**COLLECTIONS** of extra value, our selection, all different and .....**\$10.00 per Dozen Net**



## OUR NEW INTRODUCTIONS FOR 1948

(Illustrated on front cover)



**GOVERNOR WARREN** — Informal Decorative. Golden salmon shading deeper at the center. A new giant in the autumn color class that ranks with the very largest. A full, deep, broad petalled bloom well placed on a long rugged stem. This sensational new dahlia possesses real beauty as well as massive size. Named for our popular California Governor with his enthusiastic approval.....**\$15.00 Net**



**CATALINA** — Semi-Cactus. Bright rose red of the American Beauty shade. Fairly large flower most brilliantly colored that blooms early and most freely over a long period. Plant is of medium height, foliage is particularly attractive, and the numerous branches grow in such a manner as to require little dis-budding. It would be ideal for landscape work though none the less useful for exhibition or cutting. We consider this one of the most impressive of all our dahlias.....**\$15.00 Net**



**HIGHLANDER** — Informal Decorative. Scarlet-pink with a lighter reverse to the petals. "Watermelon" is the color visitors invariably called it. A very bright new shade of pink in dahlias as far as we know. This is not an extremely full flower but is very artistically formed. Tall, strong and easy to grow, as well as a continuous performer. Ideal stems and foliage.....**\$15.00 Net**



**SPECIAL OFFER** — One strong division each of the three above-mentioned new introductions for.....**\$40.00 Net**



CALIFORNIA PAGEANT



FRIEDA GAYLORD

## OTHER DAHLIAS OF OUR OWN INTRODUCTION

**ALCAZAR** — S.C. Deep fuchsia red or bright reddish purple. It belongs in the purple class according to the color chart, and the formation of the flower is frequently very close to the true cactus type. A nice large dahlia outstanding as to beauty and distinctiveness that blooms early and freely on the best of stems. New 1946.....**\$5.00**

**AZURA** — I.D. Rosy lilac with a bluish-violet sheen. A very large deep flower which has won several times as largest flower in the show with blooms measuring 12 to 14 inches. Plant is tall and strong and the blooms have a distinctive and interesting formation.....**\$1.50**

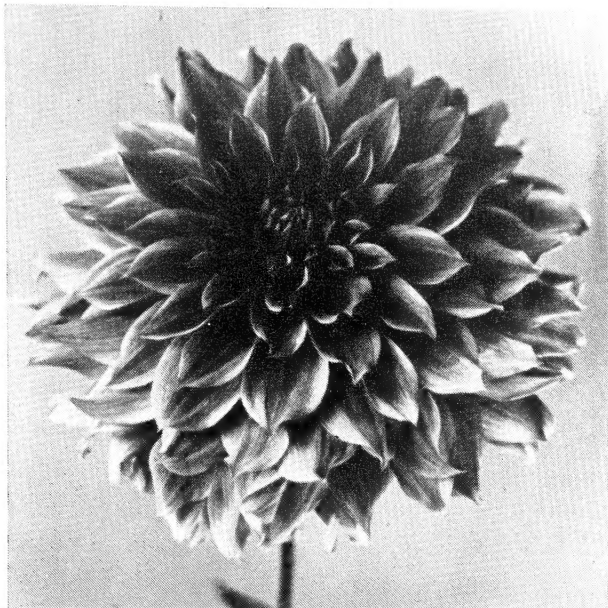
**BALLAY ROUGE** — I.C. Bright clear red. Fine petalled true type cactus in a very popular color. Size is large for a cactus, excellent form, perfect stems, a free and early bloomer. It has been outstanding in many parts of the country this year. New 1945.....**\$3.50**

**BEAU BRILLIANT** — I.D. Bright carmine. A truly brilliant color that is impressive both in the garden and show room. It is a large full flower, a profuse bloomer, and the plant growth is all that can be desired. Seems to thrive under all weather conditions.....**\$2.50**

**BELVEDERE** — I.D. Silvery pink, a clear true pink with lighter shadings. This is a huge flower with excellent substance. Stem is extra long, straight and strong. Plant is very vigorous and produces freely. New 1945.....**\$3.50**

**BOSPHORUS** — I. D. Burnt orange. Large, well-shaped flower of rare coloring. Reliable and satisfactory in all respects.....**\$1.00**





NIGHTINGALE



BUTTERFLY

**BUTTERFLY** — I.D. Henna-orange with reverse and center rosy mauve. The odd combination of color is new and has been the subject of much favorable comment. It is a large, well-formed flower with pointed petals, reliable and attractive. Prolific bloomer.....**\$7.50**

**CALIFORNIA IDOL** — I. D. Lemon yellow. Famous the world over. A very large flower with ideal habits that is seldom surpassed either for garden performance or for exhibition. One of the truly great dahlias.....**\$1.00**

**CALIFORNIA PAGEANT** — I. D. Bright gold with shadings of reddish bronze. Very large flower of very gay coloring. Strong, straight stems hold the well-formed blooms facing perfectly. Highest scoring dahlia at Storrs in 1946. Three blooms on one plant at the same time measured 13 x 8 inches.....**\$7.50**

**CALIFORNIA PEACH** — S. C. Bright coral or peach. Definitely attractive because of size and color. A little difficult to grow in some localities.....**\$1.50**

**CALIFORNIA ROSE** — I.D. Clear bright rose. Exquisite coloring, large, tall growing. Has been described as a good keeper when cut.....**\$1.00**

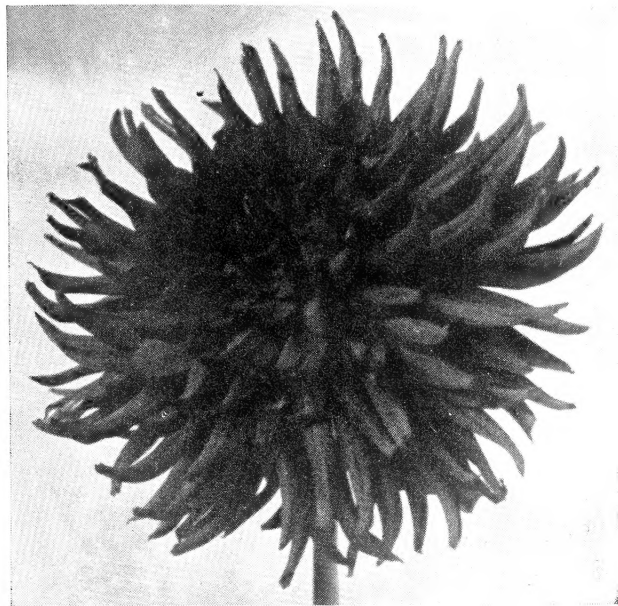
**CONFUCIUS** — S.C. Chinese red (bright coral red). This very striking dahlia is a real giant with many winnings to its credit. Few dahlias have achieved greater popularity and it doubtless ranks with the very best.....**\$1.50**

**CORONADO** — I.D. Bright rose magenta. An interesting and sturdy variety that should be more widely grown. Flower is large and of very attractive coloring with a good stem. Plant of medium height.....**\$1.00**

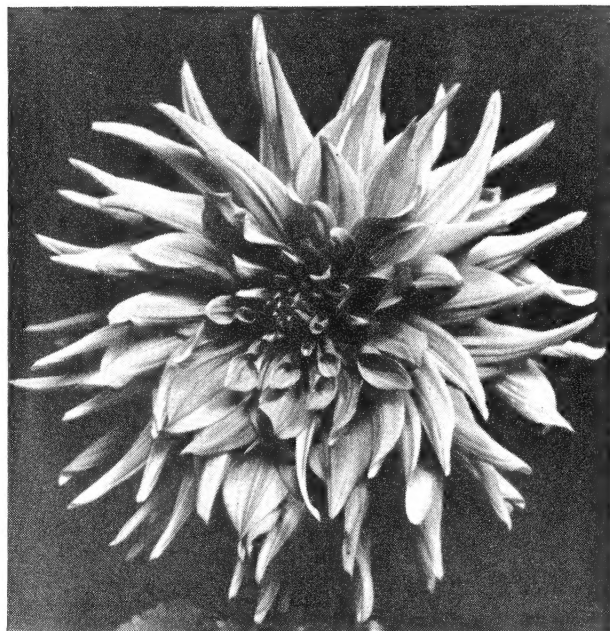
**DOROTHY LAMOUR** — Str. Cac. True orange. A dahlia of great charm because of its rare color and useful qualities. This is a distinctive variety that is much in demand.....**\$2.00**

- DRESDEN** — I.D. Clear pink lavender. An uncommon color and very pleasing. A grand old dahlia.....**\$1.00**
- ESPLENDIDO** — I.C. Reddish coral pink. True type cactus of a most attractive and unusual color. Very tall, strong growing and an abundant producer of fine blooms. One of the best cactus in commerce.....**\$2.00**
- EUGENIA BALLAY** — I.D. Rich cream. An early and free-blooming variety with good habits of growth. Good color. Fair size.....**\$1.00**
- EVELYN CHANDLER** — S.C. Golden apricot. A spectacular flower of fine coloring and great size. It has been a consistent winner in numerous shows, sometimes as largest bloom. Very desirable.....**\$1.00**
- FAVORITA** — I.C. Canary yellow. Best yellow cactus. The outer petals of this true type cactus fold well back to the stem. Bloom is of good size and stem is always good.....**\$2.00**
- FIRST LADY** — I.D. Yellow shaded orange. Large flower of fine form. Strong grower with attractive foliage and stems holding the blooms well above the plant. A very good variety.....**\$2.00**
- FRIEDA GAYLORD** — I.D. Rosy pink lightly shaded with gold. A magnificent dahlia of remarkable size and vigor. Will produce very large blooms through the whole season, some as large as 15 inches in diameter. Has won a number of major prizes in the leading shows in different parts of the country the past year. That it is one of the truly great dahlias of all time is our candid opinion. New 1946.....**\$5.00**
- GALA CALIFORNIA** — I.C. Scarlet orange. One of the best cactus. Attracts attention because of the bright unusual color. It will supply many fine blooms on good stems and seems to do well anywhere.....**\$1.00**
- GAYLORD BALLAY** — I.D. Pure white. A new giant white that has created a great sensation. Superlative size, vigorous, tall growing. Largest and purest white to date that is winning in strong competition.....**\$2.50**
- GERTRUDE LAWRENCE** — I.D. Light cerise red. Outstanding variety both as to size and color. Early to bloom. Plant of medium height.....**\$1.00**
- GRANDEE** — I.D. Light red shaded orange yellow. Noticeable because of its great size. Plant growth rather sparse.....**\$1.50**
- GRAND MARSHAL** — S.C. Reddish-violet. Large true type semi-cactus. Uncommon color. Particularly good in the late season.....**\$1.50**





ALCAZAR



MONTEZUMA

**JOSEPH B. LANKTREE** — I.D. Bright red without shadings. A champion prize winner in California. Massive blooms 12 to 14 inches. Continues until the end of the season. Outstanding in its class.....**\$2.50**

**KING COLE** — I.D. Deep maroon red. Few dahlias will stand hot weather better. Flowers are large, well formed and with good stems. Not a prolific bloomer.....**\$2.00**

**LELAND STANFORD** — I.D. Brilliant cardinal. One of the best reds. Does not fade and will withstand difficult conditions. Large size, robust grower.....**\$1.00**

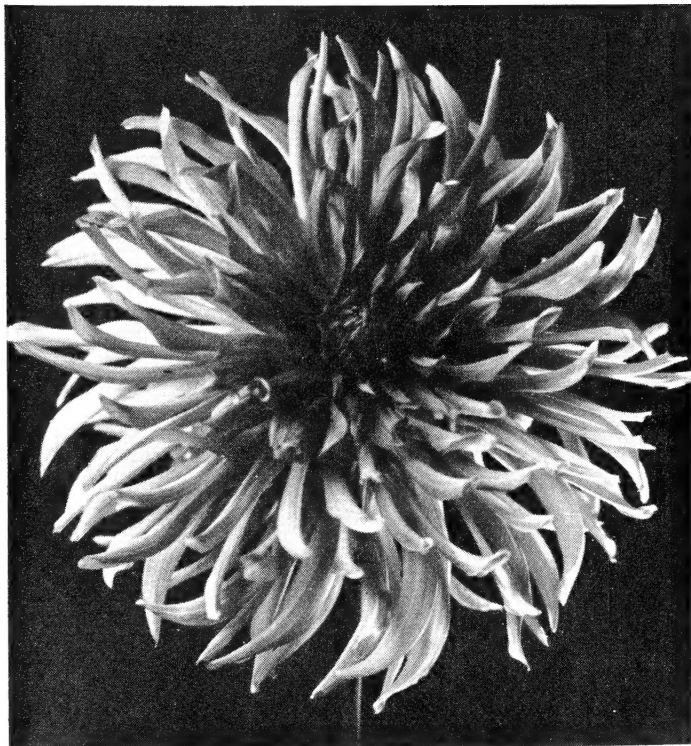
**MAGNA CHARTA** — I.D. Deep old rose. Charming flower of rare color. Will grow large on a long cane-like stem. Clean sturdy bush growth. Has not shown any faults or failings.....**\$2.50**

**MAESTRO** — S.C. Purple cerise. A richly-colored large flower of remarkable substance and most pleasing appearance. All good qualities and highly recommended.....**\$1.50**

**MISS GLORY** — S.C. Apricot-yellow. A refined flower of large size and excellent form. Well known and popular. One of the best in its class.....**\$1.00**

**MONTEZUMA** — S.C. Reddish copper or terra cotta. A giant semi-cactus on the type of Confucius. The big, bold flower has depth as well as diameter and the color is attractive and unusual. New 1946.....**\$5.00**

**NIGHTINGALE** — F.D. Deep magenta rose shading somewhat lighter at the tips of the petals. The color is generally referred to as fuchsia. A truly spectacular flower and strictly of the formal type. Better proportioned stems and more rugged plant growth would be hard to find. Large size.....**\$7.50**



BALLAY ROUGE

**PACIFICA** — S.C. Saffron yellow, light reverse. A beautiful and distinctive yellow dahlia. Petals are broad and numerous and flower will attain spectacular size. An all-purpose variety.....**\$1.50**

**PACIFIC SPLENDOR** — I.D. Delicate pink shading to white center. Artistic bloom of large size. A delightful color when properly grown. Habits of growth are good.....**\$1.00**

**PALO ALTO** — I.D. Salmon shading to gold. One of the best of the older varieties. A dahlia of fine color that is easy to grow. Rather tall plant producing many good flowers on long stems.....**\$1.00**

**REGALIA** — I.C. Bright cerise. An unusual cactus with perfect stems. This dahlia has proven to be a valuable addition to its class on account of its many fine qualities. A striking color and a lavish bloomer throughout the season. **\$2.00**

**SAN FRANCISCO** — I.D. Shrimp pink. A giant of great beauty. Rugged grower with extra long strong stems.....**\$1.00**

**SATAN** — S.C. Flaming red, gold center. A great dahlia that is known wherever dahlias are grown. Greatest prize winner of its day.....**\$1.00**

**SILVER JUBILEE** — I.D. Bright pink tipped white. Something entirely new in a bi-color. Consistently large flowers all similarly tipped. Has been well recommended and should become well known. New 1945.....**\$3.50**

**SIR FRANCIS DRAKE** — I.D. Golden bronze shading deeper at the center. Very large flower with exceptional depth. One of the very best in the autumn shades which are always popular. We have had many fine reports on the performance of this dahlia the past season.....**\$2.00**

**YANKEE DOODLE** — I.D. Fuchsia purple with crimson shadings. Giant size, rare coloring, good habits. An ideal exhibition dahlia. Not particularly recommended for climates where the summers are extremely hot and dry.....**\$2.50**

## GOOD VARIETIES OF OTHER GROWERS

(Name in parenthesis is that of the introducer. In the case of foreign dahlias the name of the country is given)

**ADOLPH MAYER** — I.D. (Holland.) Maroon. Very dark medium sized flower. Strong free branching plant and a prolific bloomer..... **\$1.00**

**A. C. GOODACRE** — F.D. (Dixie.) Bright yellow tipped white. A real bi-color. Vigorous and productive..... **\$1.50**

**ALICE MAY** — I.D. (Australia.) Pure white. Large and deep with good stems and excellent substance. Dependable in the garden and generally useful.... **\$1.00**

**ALL AMERICAN** — S.C. (Salem.) Mulberry rose. A true semi-cactus of good form, unusual color and large size. Very desirable for all purposes..... **\$1.50**

**AMELIA EARHART** — S.C. (Cordes.) Apricot buff with salmon shadings. One of the best of the older varieties because of the richly colored blooms of large size held facing on a good stem..... **\$1.00**

**AXFORD TRIUMPH** — I.D. (Australia.) Bronze and tan. A new variety of large size that is a robust grower with excellent habits..... **\$2.50**

**BETTY STAKER** — I.D. (Australia.) Dull gold with rose shadings. A massive flower and a beautiful color. Very impressive in the garden..... **\$2.00**

**BILL'S GOLD** — I.D. (Australia.) Bright old gold. One of the best of its color and an all-around fine dahlia. Very large, good grower, good stems..... **\$2.00**

**BLUE RIVER** — I.D. (Salem.) Bluish-lavender. As near to blue as we have in dahlias. Always attracts attention. Good size..... **\$1.00**

**CAMEO** — F.D. (Fisher-Masson.) Soft coral or salmon pink. Color is most pleasing. Large flowers on long stems. Very satisfactory..... **\$1.00**

**CARL G. DAHL** — I.D. (Scott.) Old rose and gold. A consistent winner as largest bloom. Petals are broad and well placed and have good substance..... **\$1.50**

**CHARLOTTE COLLIS** — I.D. (Australia.) Orange red. Brilliant color and a free and early bloomer. Stems are weak at times..... **\$2.00**

**CLARA CARDER** — I.D. (Australia.) Cyclamen pink. A new and pleasing color, fine form. Has capacity for great size. Prefers cool weather..... **\$1.00**

**CHAUTAUQUA GIANT** — I.D. (Chautauqua.) Sunset pink and gold. Large and attractive. Blooms freely on fair stems..... **\$1.50**



REGALIA

**CHAS. L. MASTICK** — F.D. (Mastick.) Glis-  
tening orange shading darker toward the  
center. A perfect formal decorative espe-  
cially good for cutting. One of the best  
in its class.....**\$1.00**

**CHEROKEE BRAVE** — I.D. (Dahliadel.)  
Deep red. Good grower, large size, stands  
unusual weather well.....**\$1.00**

**COLIN KELLY** — I.D. (Salem.) Lavender  
pink. Exquisite bloom of enormous size.  
Stems are long but slender and need sup-  
port.....**\$2.50**

**CONQUEROR** — S.C. (Holland.) Clear sulphur yellow. Well-formed clean-cut  
flower of fairly large size and good stems. A useful and beautiful variety. New  
1946.....**\$3.50**

**COMMANDO** — F.D. (Golden Rule.) Phlox purple. Vividly colored bloom,  
large and attractive. A formal in a new color.....**\$2.50**

**CORNELL** — I.D. (Parrella.) Deep red, tipped white. A fair sized bi-color with  
good markings. Good grower but not a prolific bloomer.....**\$2.00**

**DAHLIAMUM** — I.D. (Chemar.) Bronze gold. Very large flower, carried on top  
of a strong stem, that looks like a shaggy chrysanthemum.....**\$2.50**

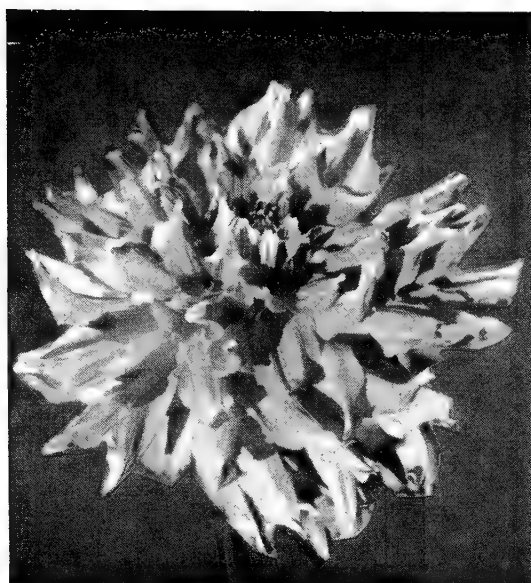
**DARCY SAINSBURY** — F.D. (Australia.) White. Large, full flower that is con-  
sidered by many the best white formal to date. A white that will stand the  
weather. Good grower.....**\$1.00**

**DIXIE'S WINE DOT** — I.D. (Dixie.) White ground striped and splashed wine  
red. Something new and good. A most unusual variegated dahlia of very large  
size and sturdy growth.....**\$2.50**

**EVENTIDE** — I.D. (Bissell.) True purple. Fairly large flowers of unusual form,  
each petal being notched and slightly twirled. Nice plant with dark foliage. **\$2.00**

**EL RUBIO** — I.D. (Redfern.) Wine red. Very large bold flower. Plant growth  
extremely rugged. A late bloomer and one of the most attractive in the garden  
in the late fall.....**\$1.50**

**ESSIE SMITH** — I.D. (Smith.) Lavender pink. Large deep flower. Strong grow-  
er with good habits.....**\$2.50**



JOSEPH B. LANKTREE



FIRST LADY

**FIGARO** — S.C. (France.) Bright yellow striped red. A sport of Satan with similar qualities. An excellent bi-color although a certain percentage of the blooms will come solid red.....**\$1.50**

**FIVE-STAR GENERAL** — F.D. (Ramage-Ruschmohr.) Blend of soft pink and creamy yellow. An exceptional dahlia of real merit. Large, well formed and a good grower. A 1946 introduction that impressed all visitors. Highly recommended.....**\$5.00**

**FREDA GEORGE** — I.D. (Australia.) Creamy pink with shadings of rose. A delicately colored variety with excellent qualities. Long a favorite in this country.....**\$2.50**

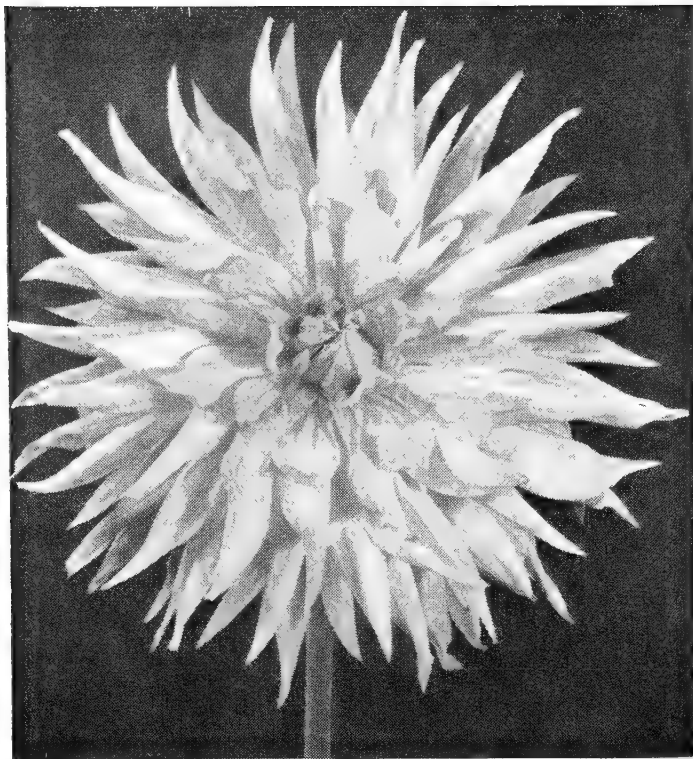
**GALAXY** — I.C. (England.) Yellow striped and splashed with red. A very interesting and satisfactory cactus. Flowers are full and well formed. Plant is tall and sturdy.....**\$2.00**

**GAY KNIGHT** — I.D. (Australia.) Bright red suffused gold. This brightly colored bloom is extra large and held straight up on a perfect stem. One of the largest and best from Australia.....**\$2.50**

**GLAMOUR** — I.D. (Salem.) Light purple with shadings of rose. Grows large without pampering and is a consistent winner in the shows. Color, form and habits are all good.....**\$2.00**

**GOLDEN STANDARD** — I.C. (Downs.) Amber buff. Large exhibition cactus. Good grower and excellent keeper.....**\$1.00**

**GOULBURN** — I.C. (Australia.) Yellow shading to apricot. A true cactus of large size. Outstanding in its class with great possibilities in the showroom. **\$2.50**



EVELYN CHANDLER

**GREATER GLORY**—S.C. (Salem.) Rose pink shading to cream. Large well-formed flower on a tall plant. A valuable addition to the semi-cactus class. ....\$1.00

**HILLSIDE JOY**—S.C. (Bissell.) Apricot buff. Artistic flower of beautiful coloring and fine stems. Medium size.....\$2.00

**HULIN'S MELODY**—S.C. (Hulin.) Pale gold with mauve shadings. Fine bloom of good size in an odd color combination. Grows strong and blooms abundantly. Very desirable.....\$2.00

**HUNT'S VELVET WONDER**—I.D. (Hunt-Burnett.) Cerise purple. This is a huge flower with broad petals and great depth. Plant is rugged and of medium height with rather short stems.....\$1.00

**INDIAN GIANT**—I.D. (Emmons.) Reddish apricot. Very large exhibition variety. Plants are low and bushy and continue to produce fine blooms over a long period. Color is different and much admired.....\$2.50

**IVORY PRINCESS**—S.C. (Ruschmohr.) Ivory white. Large, well-formed flower of an unusual shade. Strong grower with good stems. Outstanding.....\$2.00

**JANE LAUSCHE**—S.C. (Rocky River.) Lavender tipped white. Decidedly a new combination of color and an all-around good dahlia. It was a big prize winner in its introductory year. A novelty of real merit. New 1945.....\$3.50

**KIRSTEN FLAGSTAD**—I.D. (Rocky River.) Bright gold with a reddish suffusion. First blooms are very large. Stems are long and strong. An early bloomer....\$2.50

**LILAC GIANT**—S.C. (Salem.) Pinkish lilac. A dahlia of tremendous size. Low growing plant but stems are sufficiently long. There are not many semi-cactus varieties in this shade and this is a good one.....\$3.50



**LYNN FONTANNE** — S.C. (Lee-Parrella.) Light red. Very large and full. Improves as the season advances. Winner of many prizes as largest bloom.....**\$2.00**

**MAFFIE**—S.C. (Exnar-Johnson.) Carmine red. Truly spectacular. First blooms are extremely large and have frequently won as largest in the show. Tall, open grower. ....**\$2.00**



SILVER JUBILEE

**MARGRACE** — I.D. (Bissell.) Bright red lightly tipped gold. The large long-stemmed blooms are freely produced through the whole season.....**\$1.00**

**MARION SMITH** — I.D. (Australia.) Clear pink. The large graceful blooms fairly cover the sturdy plant of medium height. A charming color and a first-class dahlia in every way.....**\$2.50**

**MARY RETZER** — I.D. (Retzer.) Clear lavender. A clean crisp flower of fairly large size. Fine growing habits. Good.....**\$1.00**

**MISS SAN DIEGO** — I.C. (Comstock.) Bright salmon pink with yellow center. Nice full flower with cleft petals. One of the very best cactus. New and unusual.....**\$7.50**

**MONARCH OF THE EAST**—I.D. (Almy.) Bright golden apricot. Giant flowers borne profusely on a rampant growing bush. Colorful.....**\$1.00**

**MOTHER'S DAY** — I.D. (Australia.) Creamy white. Beautifully shaped blooms of great size. Stem stalks are very tall and sometimes need support.....**\$2.00**

**MOON GODDESS** — I.D. (Dozier.) Primrose yellow. Attractive nicely formed flower of large size. Husky plant growth and strong stems.....**\$2.50**



- MRS. HESTER A. PAPE** — I.D. (Pape-Rocky River.) Reddish purple. Popular 1946 introduction of rich coloring. Large, sturdy and attractive. A big winner in the shows.....**\$5.00**
- MRS. THOMAS EDISON** — I.D. (Chautauqua.) Ruby red, with silver reverse. Outstanding color effect. Flower can be grown to good size and is always a bright spot in the garden.....**\$2.00**
- MURPHY'S MASTERPIECE** — I.D. (Success.) Deep red. This dahlia is naturally large and can be grown to great proportions. Has been a contender in the largest class for many years. Strong grower with good stems.....**\$1.50**
- NANCY C. SCHARHAG** — I.D. (Sunset.) Mallow pink striped and splashed wine purple. A sport of Dixie's Wine Dot which it very much resembles in everything but color. Very reliable. New 1947.....**\$7.50**
- NIRWANA** — I.C. (Holland.) Yellow and salmon. Beautiful new cactus. Flowers profusely and has strong straight stems.....**\$2.50**
- NORMA MORTON** — I.D. (Australia.) Rich yellow shading to orange. Large size, robust grower, stems strong and erect. Good.....**\$1.50**
- PEARL HARBOR** — I.D. (Dixie.) Lavender striped and splashed deep red. A very pretty variegated dahlia of good size. Habits satisfactory.....**\$2.00**
- PINK AMELIA** — S.C. (Edison.) Rose pink. A remarkable sport of Amelia Earhart with all the good points of the parent variety. Good texture and erect stem. **\$1.50**
- PINK GIANT** — I. D. (Holland.) True pink. This is hardly a giant according to the American idea but it is large enough for all general purposes. The color is impressive and it has achieved great popularity in this country. Highly recommended.....**\$1.00**
- POET'S DREAM** — I.D. (Salem.) Shell pink or possibly soft apple blossom pink. Extraordinary as to color and size and of most beautiful formation. This would be one of the finest of all dahlias if it had a better stem.....**\$2.50**
- PREMIER'S WINSOME** — I.D. (Premier.) Soft pink with rose shadings. Good form and substance and good grower. Unusual color.....**\$2.00**

- REAL GLORY** — F.D. (Stephenson.) Pure white. A clear glistening white of fine form and extra good substance. Good grower and free bloomer. Unsurpassed in its class.....**\$2.50**
- RITA WELLS** — I.D. (Ruschmohr.) Pale rose and buff. Very large early flowering variety. Excellent growing qualities.....**\$1.00**
- RUBY LOXTON** — I.D. (Australia.) Bright rose. Large well-colored flower. Blooms early and freely on a strong vigorous plant.....**\$2.00**
- SALEM SUNSHINE** — I.D. (Salem.) Bright yellow. Another very large new yellow. Bush is low but stems are long and wiry and hold the magnificent bloom upright. Is not temperamental as to weather.....**\$2.50**
- SARETT'S PINK FLAMINGO** — I.C. (Ruschmohr.) Clear rose pink. A charming cactus dahlia that has been a big winner in the shows. Large size for a cactus and with excellent formation and stem. This has given us some very fine blooms this season.....**\$2.50**
- SHERWOOD'S PEACH** — I.D. (Ruschmohr.) Apricot buff. Very large size, beautiful color, vigorous grower. New and striking.....**\$2.50**
- SILVER GLAMOUR** — I.D. (Golden Rule.) Rosy purple with petals suffused and edged with white. Quite similar to the original Glamour in everything but color. Spectacular. ....**\$10.00**
- SOUTHERN ROSE** — I.D. (Dozier.) Bright rose pink. Large and attractive both for garden or exhibition. Strong grower and good bloomer.....**\$3.50**
- ST. THERESA** — I.C. (Holland.) Pale pink with white center. Dainty flower of true pastel coloring. Stem strong and straight.....**\$2.50**
- STEPHEN FOSTER** — I.C. (Salem.) Golden buff suffused orange. Tall, strong plant producing many well-formed flowers of large size. A valuable addition to the cactus class.....**\$2.00**
- SUNBURST** — I.D. (Smith.) Golden yellow. Giant blooms freely produced on a strong vigorous plant. A first-class new yellow.....**\$5.00**

- TOPFLIGHT** — S.C. (Dozier.) Bright crimson. Fine large red that does not fade. Perfect formation. Long straight stem. Tall grower.....**\$2.50**
- TOPS**—I.D. (Dozier.) Bright yellow. A true giant in the most pleasing shade of yellow. Has good depth and is well formed. Never fails to attract attention. **\$2.00**
- TOWN TOPIC** — F.D. (Hulin.) Bright purple sometimes tipped white. Full, well-built flower on a long strong stem. A nice variety.....**\$1.50**
- TROJAN** — I.D. (Salem.) Deep red with yellow reverse. Color will vary from deep red to almost orange in flowers on the same bush. All are large and well supported by good stems.....**\$1.50**
- VICTRIX** — I.D. (Holland.) Bluish lilac. Large flower of unusual coloring. A foreign novelty of real promise.....**\$3.50**
- VIRGINIA RUTE** — I.D. (Chautauqua.) Dark red. Large, deep, broad petalled bloom. All around good dahlia.....**\$1.50**
- WAKE ISLAND** — S.C. (Hulin.) Deep bright red. A nice large flower of most attractive coloring. Blooms freely on a strong, shapely plant.....**\$2.00**
- WENOKA** — F.D. (Hulin.) Deep orchid rose. A true formal of large size. Unusual and good. Plant tall and strong. Stem fair.....**\$1.00**
- WORLD EVENT** — I.D. (Dixie.) Deep rose pink. Large flower of pleasing formation held on a good straight stem. We like this dahlia very much as it grows in our garden.....**\$2.50**
- YOTO** — I.D. (Japan.) Amber yellow with shadings of pink. Very large flower with petals twisted and curled. Rugged grower with all good habits. Good for all purposes.....**\$1.50**